

Lok-It!® Metal Halide Lamp Family

Single-End Metal Halide Lamps with Lok-it! Base



Key Features & Benefits

- The compact design and short arc gap allows for smaller & brighter fixtures
- Fast lamp replacement with one-touch rotate & lock base and socket design
- Robust with XS technology, allowing up to 450°C at the pinch seal
- Consistent lumen output over the life of the lamp
- Improved ceramic bases allow high voltage up to 35kV
- Higher luminous efficiency than conventional HID lamps leads to higher fixture efficiency

For years now OSRAM HTI Lok-It! lamps have been meeting the toughest demands of the event industry. Specified in fixtures throughout the world, OSRAM Lok-It! lamps are known for their excellent brightness, reliability, and color quality.

Designed for ease of use and safety, Lok-it! lamps allow for handling only by the base, and insertion into the fixture from the back of the reflector, so there is less risk to the quartz capsule during installation or removal.

OSRAM Lok-It! lamps belong to the family of AC operated Metal Halide lamps primarily designed for the entertainment market.

Product Offering

Description	Wattage (W)	Color Temperature (K)	Base
HSD 300W/80/P28	300	8000	PGJX28
HTI 400W/60/P28	400	6000	PGJX28
HTI 700W/75/P28	700	7500	PGJX28
HTI 700W/75/P50	700	7500	PGJX50
HTI 1500W/60/P50	1500	6000	PGJX50
HTI 1500W/60/P50 M3W	1500	6000	PGJX50
HTI 1000W/PS	1000	6000	PGJX36
HTI 1700W/PS	1700	6000	PGJX28

Application Information

Applications

- Club lighting
- Exhibition lighting
- Lighting for major events
- Stage, studio, television

Typical Fixtures

- Follow spots and moving head fixtures

Application Notes

1. These lamps emit ultraviolet (UV) radiation and operate at high internal pressure. Before use, read the complete warnings accompanying the product.
2. Lok-It! lamps may only be operated in enclosed fixtures specially constructed for that purpose.
3. These lamps contain mercury. When disposing of lamps, always comply with federal, state, local, and provincial rules and regulations to ensure proper disposal.
4. Lok-It! lamps are designed to be operated on electronic power supplies (ECG) only.



Ordering Information

Product Number	Ordering Abbreviation	Rated Wattage	Voltage (V)	Current (A)	Lumens	Arc Gap (mm)	Base	Color Temp (K)	CRI Ra	Avg. Rated Life	Burning Position
Lok-it!® Metal Halide Lamps											
54382	HSD 300W/80/P28	300	95	3.2	27,000	5	PGJX28	8000	>85	2000	Any
54360	HTI 400W/60/P28	400	65	6.2	29,000	3.4	PGJX28	6000	>85	750	Any
54727	HTI 700W/60/P28	700	64	10	50,000	4	PGJX28	6000	>85	750	Any
54221	HTI 700W/75/P28	700	80	8.8	50,000	4	PGJX28	7500	>85	750	Any
54229	HTI 700W/75/P50	700	90	7.8	50,000	4	PGJX50	7500	>85	750	Any
54225	HTI 1500W/60/P50	1500*	100	16	135,000	5.5	PGJX50	6000	>90	750	Any
54396	HTI 1500W/60/P50 M3W	1500*	100	16	125,000	7	PGJX50	6000	>90	750	Any
Lok-it!® HTI Power Series											
54385	HTI 1000W/PS	1000	85	11.8	85,000	5.5	PGJX36	6000	>85	750	Any
53988	HTI 1700W/PS	1700	85	20	140,000	5.5	PGJX28	6000	92	750	Any

* Lamp can be operated between 1200 and 1500 watts on electronic ballasts.

Ordering Guide

HTI	/	1500W	/	60	/	P50
Product Family		Wattage		Color Temperature 60 = 6000K		Base P28=PGJX28 P36=PGJX36 P50=PGJX50

Dimensions

	HSD 300W/ 80/P28	HTI 400W/ 60/P28	HTI 700W/ 60/P28	HTI 700W/ 75/P28	HTI 700W/ 75/P50	HTI 1000W/ PS	HTI 1500W/ 60/P50	HTI 1500W/ 60/P50/M3W	HTI 1700W/ PS
Item Number	54382	54360	54727	54221	54229	54385	54225	54396	53988
Figure No.	1	2	2	2	3	2	4	4	2
Lamp length (overall) (mm) l	122	103	117	117	125	112	128	128	125
LCL (mm) a	67	56.5	56	56	65	56	65	65	60
Bulb diameter (mm) d	23	17	18	18	20	21	23	23	22

OSRAM

Americas Headquarters

OSRAM SYLVANIA Inc.

100 Endicott Street

Danvers, MA 01923 USA

Phone 1-800-LIGHTBULB (1-800-544-4828)

www.osram-america.com

OSRAM

Display/Optic Specialty Lighting

OSRAM SYLVANIA Inc.

129 Portsmouth Avenue

Exeter, NH 03833

United States: 888-677-2627

Canada: 800-265-2852

Mexico: 525-899-1807

OSRAM, Lok-it!, HSD and HTI are registered trademarks of OSRAM GmbH.
Specifications subject to change without notice.

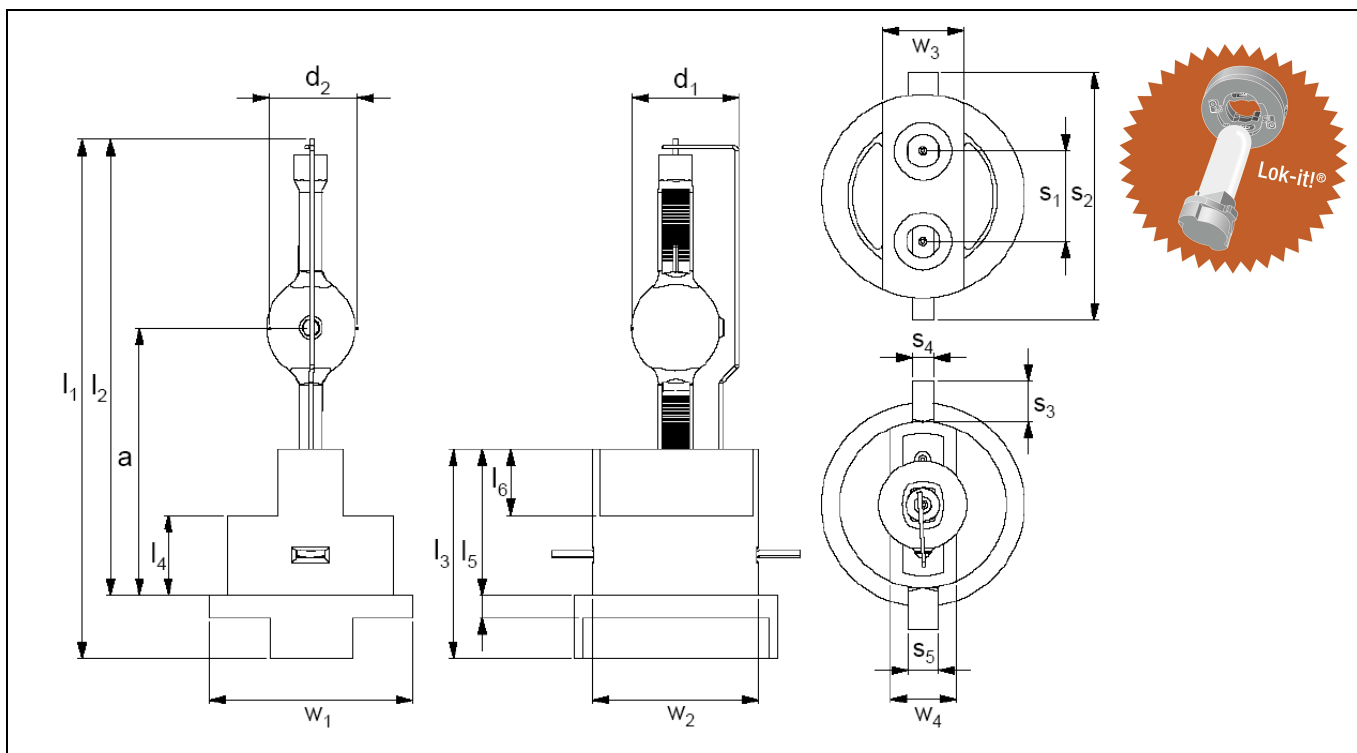




HTI® 1500W/60/P50 Lok-it!®

■ Product description

The OSRAM HTI® 1500 W/60/P50 Lok-it!® is a highly efficient, single-ended short-arc metal halide lamp with daylight-like colour temperature. On respective electronic power supplies, it could be operated from 1200W to 1500W. The new Lok-it!® plug'n'play system allows a quick one-touch lamp replacement. A respectively designed lamp holder – type PGJ50/PGJX50 – is available, too. It is very compact and hence allows cold start of the lamp only. Featuring OSRAM's XS-Technology, the lamp stands pinch temperatures up to 450°C.



■ Technical data lamp

Order reference	Lok-it!®	HTI® 1500 W/60/P50	Bulb diameter d_2	mm	max. 23
Ignition voltage (cold/hot; Mhz igniter)	kV _s	4.5 / 5 (max.)	Bulb diameter d_1 (incl. current bar)	mm	max. 27.5
Rated lamp wattage	W	1500	Base height part l_4	mm	19.5
Rated lamp voltage	V	100 ± 10	Base height part l_5	mm	35.5
Rated lamp current (~)	A	16 (max. 17.5)	Base height part l_6	mm	16
Luminous flux	lm	135,000	Base plate diameter w_1	mm	50
Luminous efficacy	lm/W	~ 90	Base neck width w_2	mm	41
Color temperature	K	6,000 ± 500	Base handle width w_3	mm	20
Color rendering index	Ra	> 85	Base neck width w_4	mm	16
Average service life	h	750	Base pin inner distance s_1	mm	22
Light arc length	mm	5	Base pin outer distance s_2	mm	61
Lamp length (overall) l_1	mm	128 ± 1	Base pin length s_3	mm	10
Lamp length l_2	mm	112 ± 1	Base pin width s_4	mm	5
LCL a	mm	65 ± 1	Base pin width s_5	mm	7

Technical Information

No. DO 5553

Edition: 04/08 - subject to change

Supersedes: initial release

Status: preliminary



plug'n'play Metal Halide Lamp

HTI[®] 1500W/60/P50 Lok-it![®]

Base height (overall) l_b mm 51

Base (pre-focus/bayonet)

PGJ50d Lok-it![®]

■ Lamp operation

Maximum pinch seal temperature allowed °C 450 / with eXtreme Seal Technology (measured at welding point)

Cooling forced cooling / fan required

Burning position any

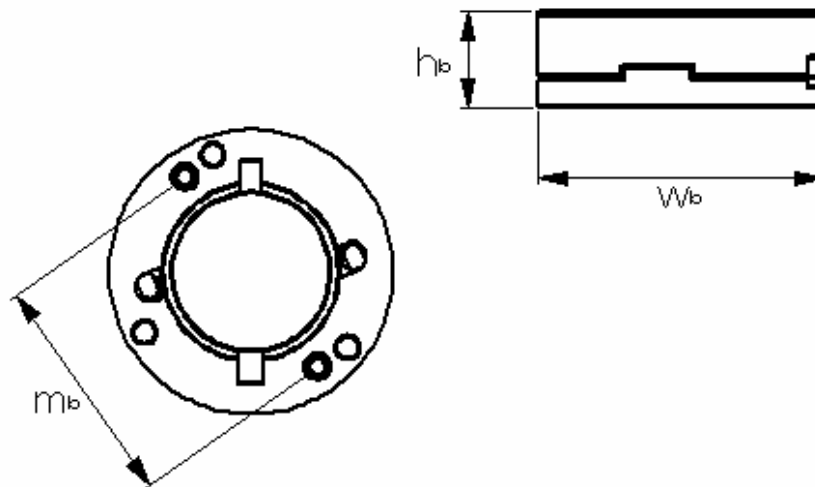
The HTI[®] 1500 W/60/P50 Lok-it![®] is designed to be operated on electronic power supplies (ECG) only.

■ Manufacturers of igniters and control gear (not all officially approved by OSRAM)

Igniters: Schiederwerk, CCI Power Supplies

ECGs: Schiederwerk PVG 12-15AC, CCI Power Supplies MHL 1500M5Z

■ Technical data lamp holder



Order reference PGJ50/PGJX50 Lok-it![®]

Max. wattage W 1575

Max. voltage V 250

Max. current (~) A 16

Max. ignition voltage kV_s 5

Max. temperature °C 350

Height h_b mm 21,3 ± 1

Width / diameter base w_b mm 80 ± 1.5

Distance mounting holes m_b mm 65 ± 0.7

Screw type for mounting M4

Lead wire diameter 1.4 ... 4 mm², attachment via screw terminal

4

3

2

1

H

G

F

E

D

C

B

A

4

3

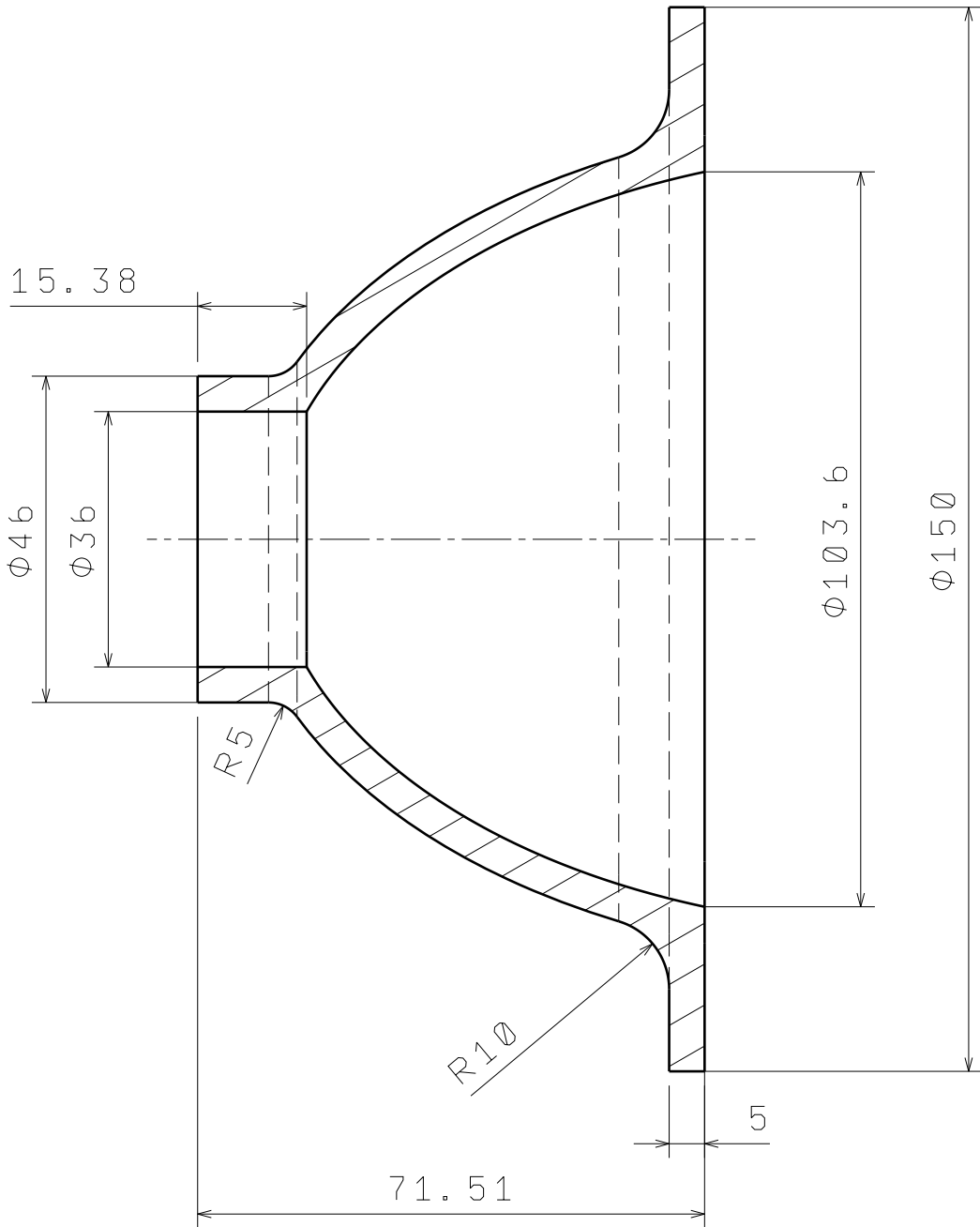
2

1

ÚFI
VUT v BRNĚ

STRUKTURA POVRCHU	
MATERIAL BOROSILIKÁTOVÉ SKLO	
KRESLIL PRIKRYLOVA	FORMAT A3
DATUM 26. 5. 2016	

MERITKO 1 : 1	
REFLEKTOR	

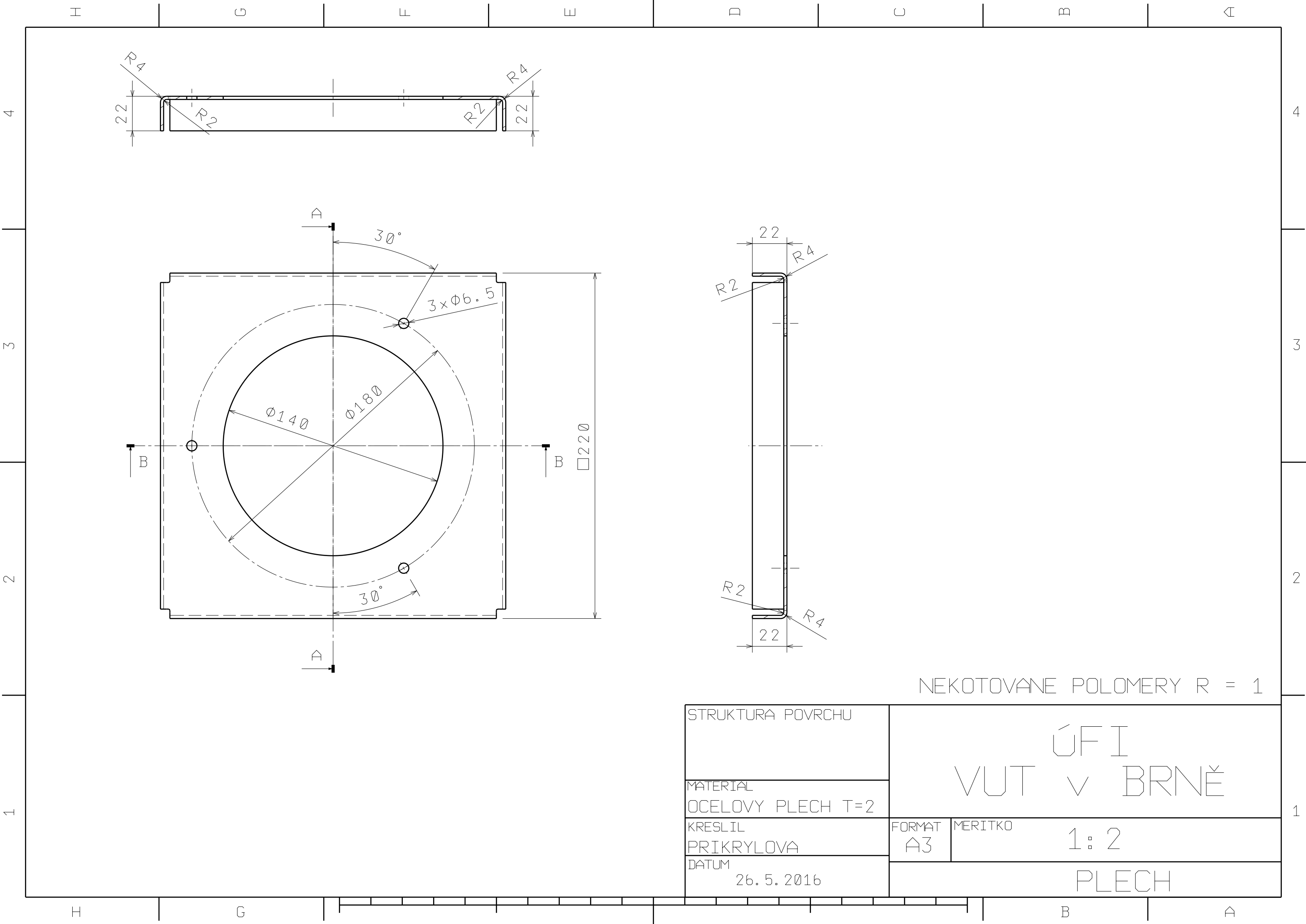


H

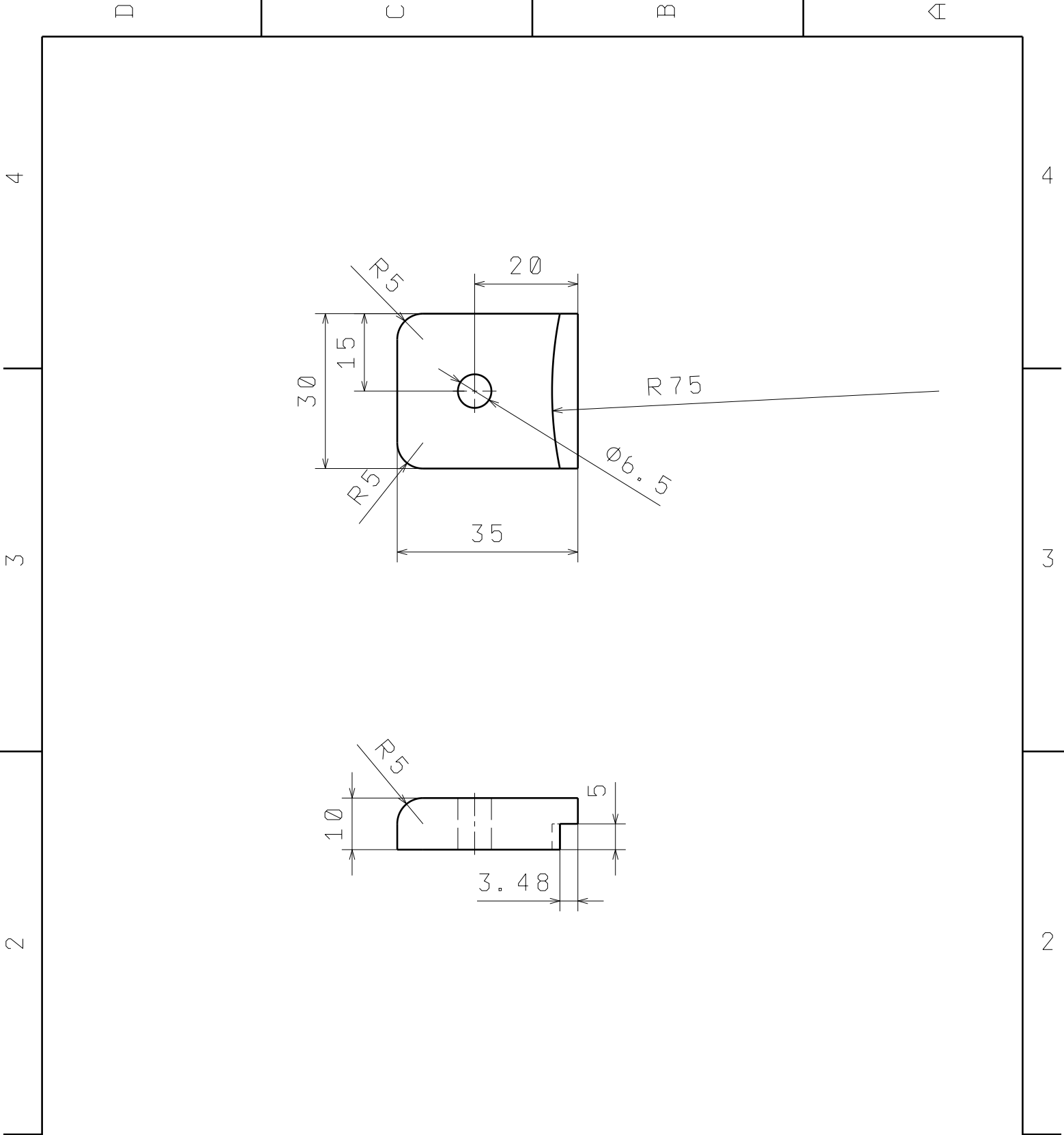
G

B

A



STRUKTURA POVRCHU		ÚFI VUT v BRNĚ	
MATERIAL OCELOVY PLECH T=2			
KRESLIL PRIKRYLOVA		FORMAT A3	MERITKO 1: 2
DATUM 26. 5. 2016		PLECH	



STRUKTURA POVRCHU

$\sqrt{Ra\ 3,2}$

MATERIAL
OCEL

KRESLIL
PRIKRYLOVA

DATUM

26. 5. 2016

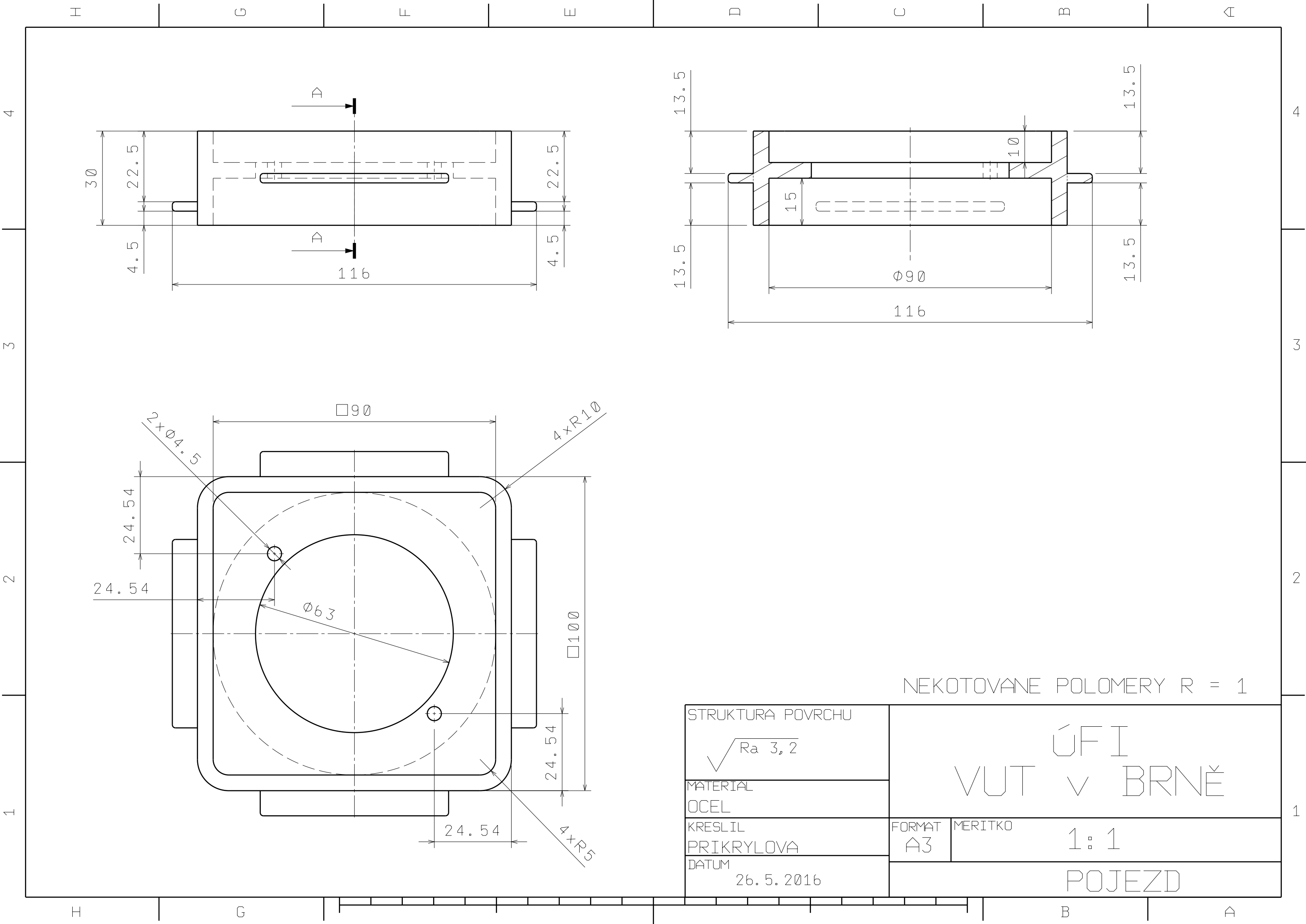
ÚFI
VUT V BRNĚ

FORMAT MERITKO

A4

1 : 1

UCHYT



4

3

2

1

H

G

F

E

D

C

B

A

4

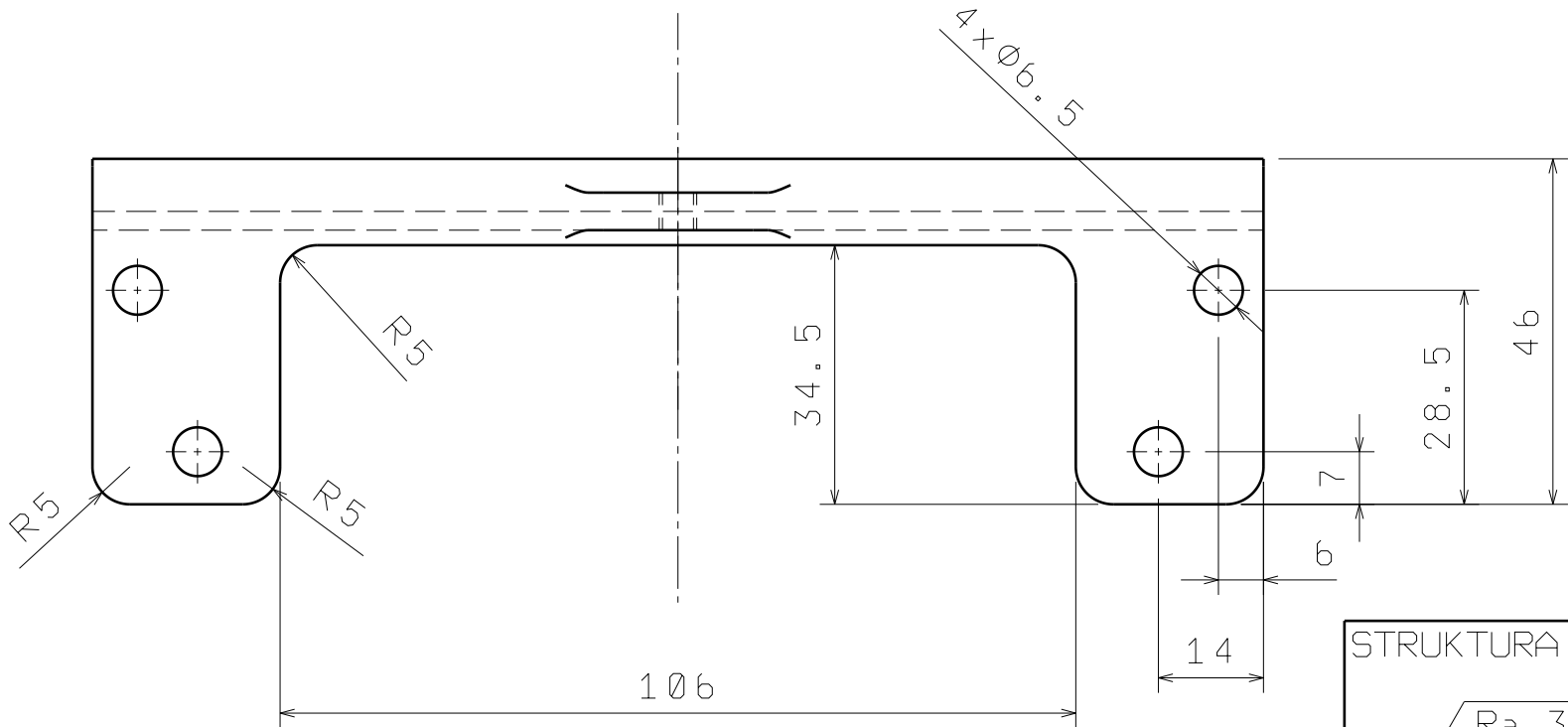
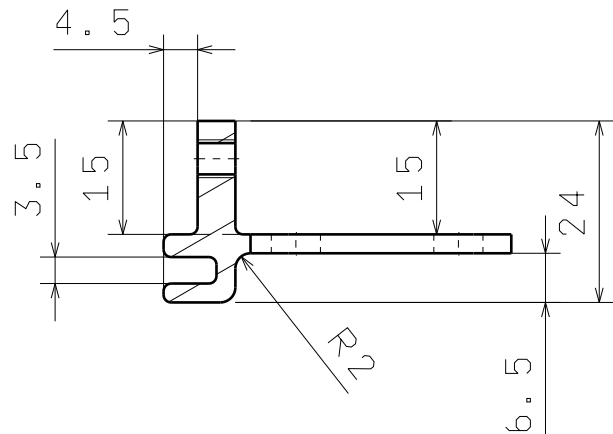
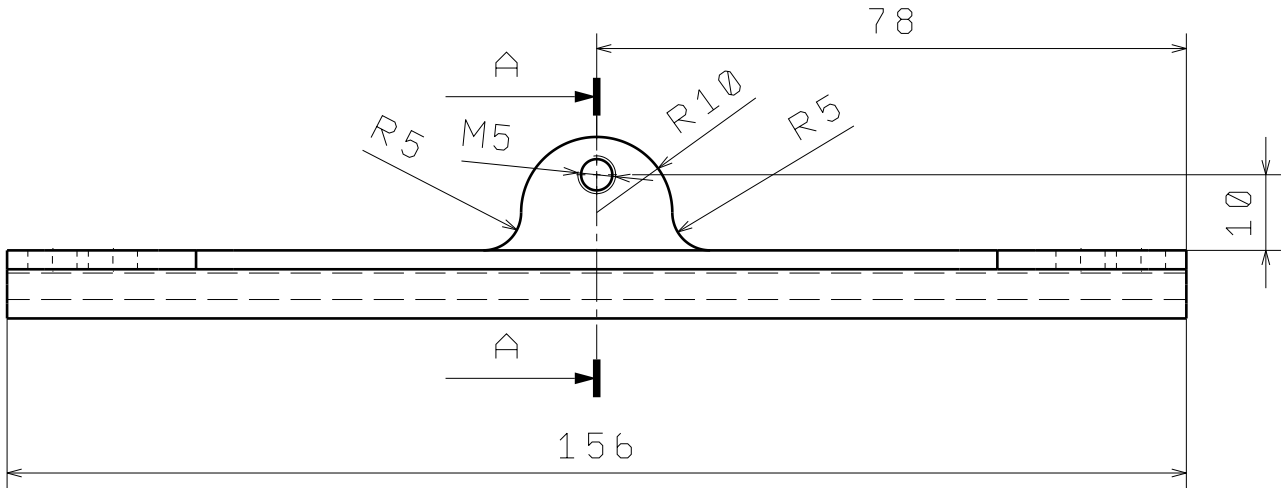
3

2

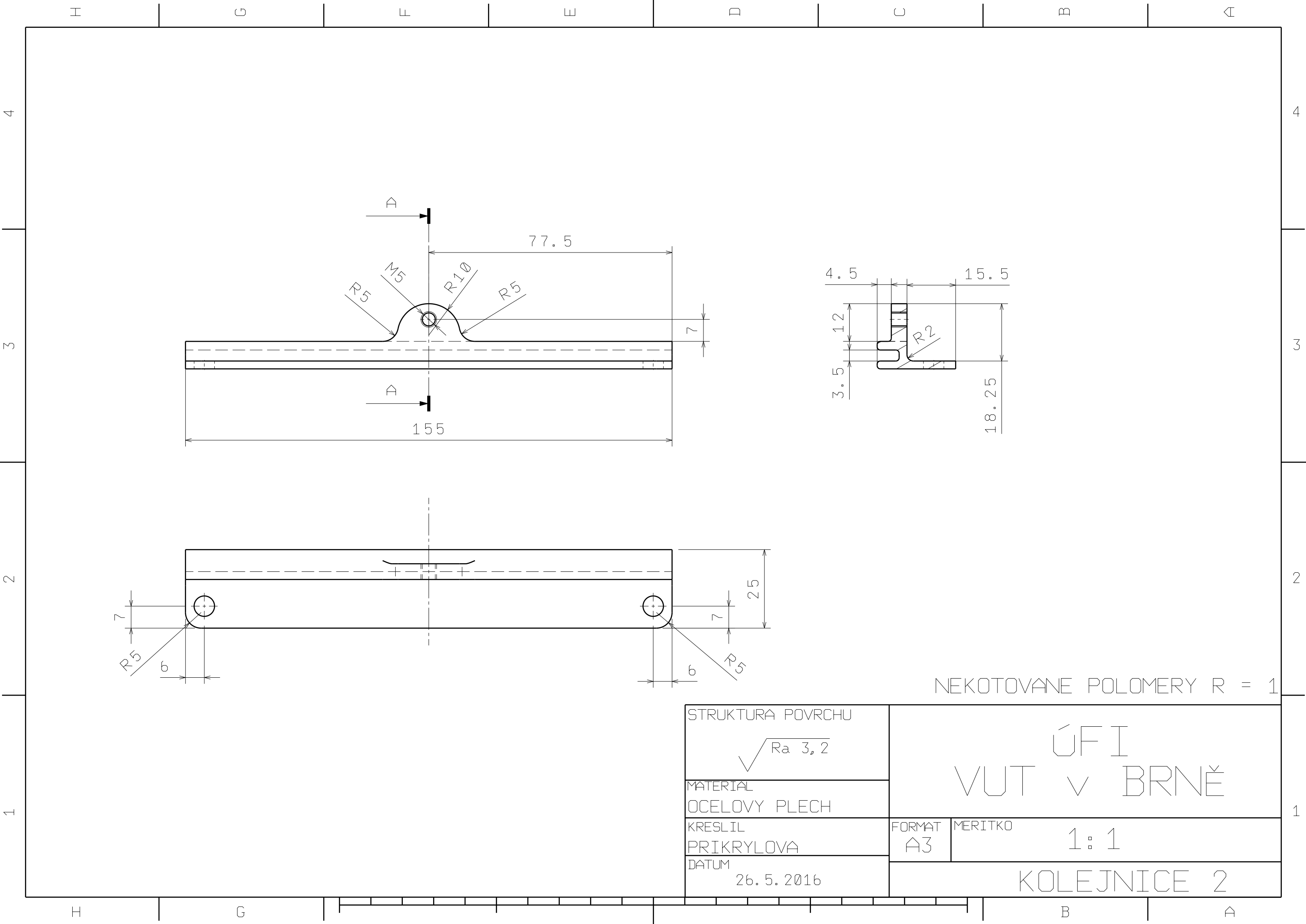
1

B

A



NEKOTOVANE POLOMERY R = 1	
STRUKTURA POVRCHU $\sqrt{Ra\ 3,2}$	ÚFI VUT v BRNĚ
MATERIAL OCEL	
KRESLIL PRIKRYLOVA	FORMAT A3
DATUM 26.5.2016	MERITKO 1:1
KOLEJNICE 1	



	D		C		B		A
4	POZ.	KOMPONENT					KS
	1	REFLEKTOR					1
	2	PLECH					1
	3	UCHYT					3
	4	POJEZD					1
	5	KOLEJNICE 1					2
	6	KOLEJNICE 2					2
3	7						
	8	OSRAM HTI-1500W-60-P50					1
	9	LAMPOVY DRZAK OSRAM SYLVANIA LOK-IT!					1
	10						
	11	SROUB ISO 4762 M4x20					3
	12	SROUB ISO 4762 M6x16					8
	13	SROUB ISO 4762 M6x25					3
2	14	SROUB DIN 464					4
	15	PODLOZKA ISO7089 6x12					11
	16	MATICE ISO 4032 M6					11
	17	L PROFIL 25x25x4 - 22					4
	18	JÄKL 30x30x2 - 185					4
	19						
	20						
1	21						
	22						
	23						
	24						
	25						
	26						
	27						
	STRUKTURA POVRCHU		ÚFI VUT v BRNĚ				
	MATERIAL						
	KRESLIL PRIKRYLOVA		FORMAT A4	MERITKO			
	DATUM 26. 5. 2016		KUSOVNIK				
	D						A

4

3

2

1

H

G

F

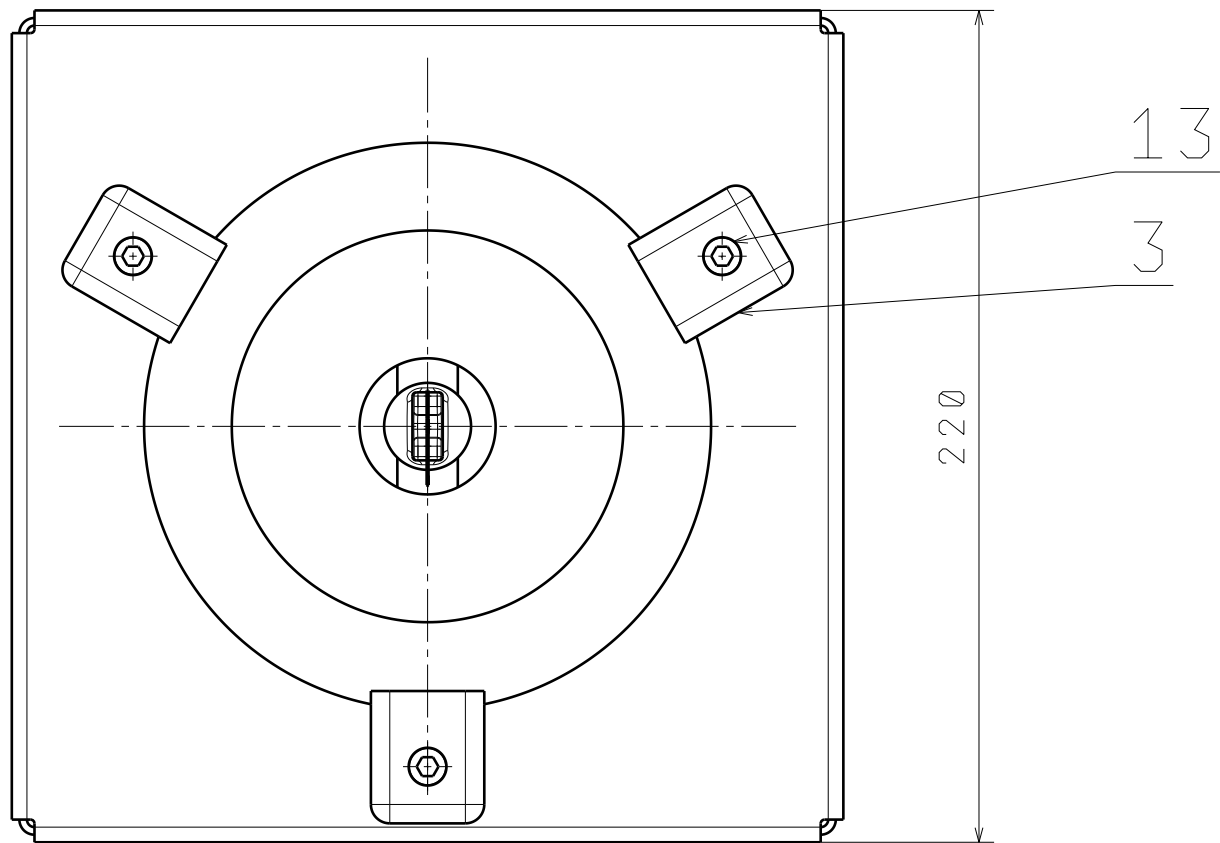
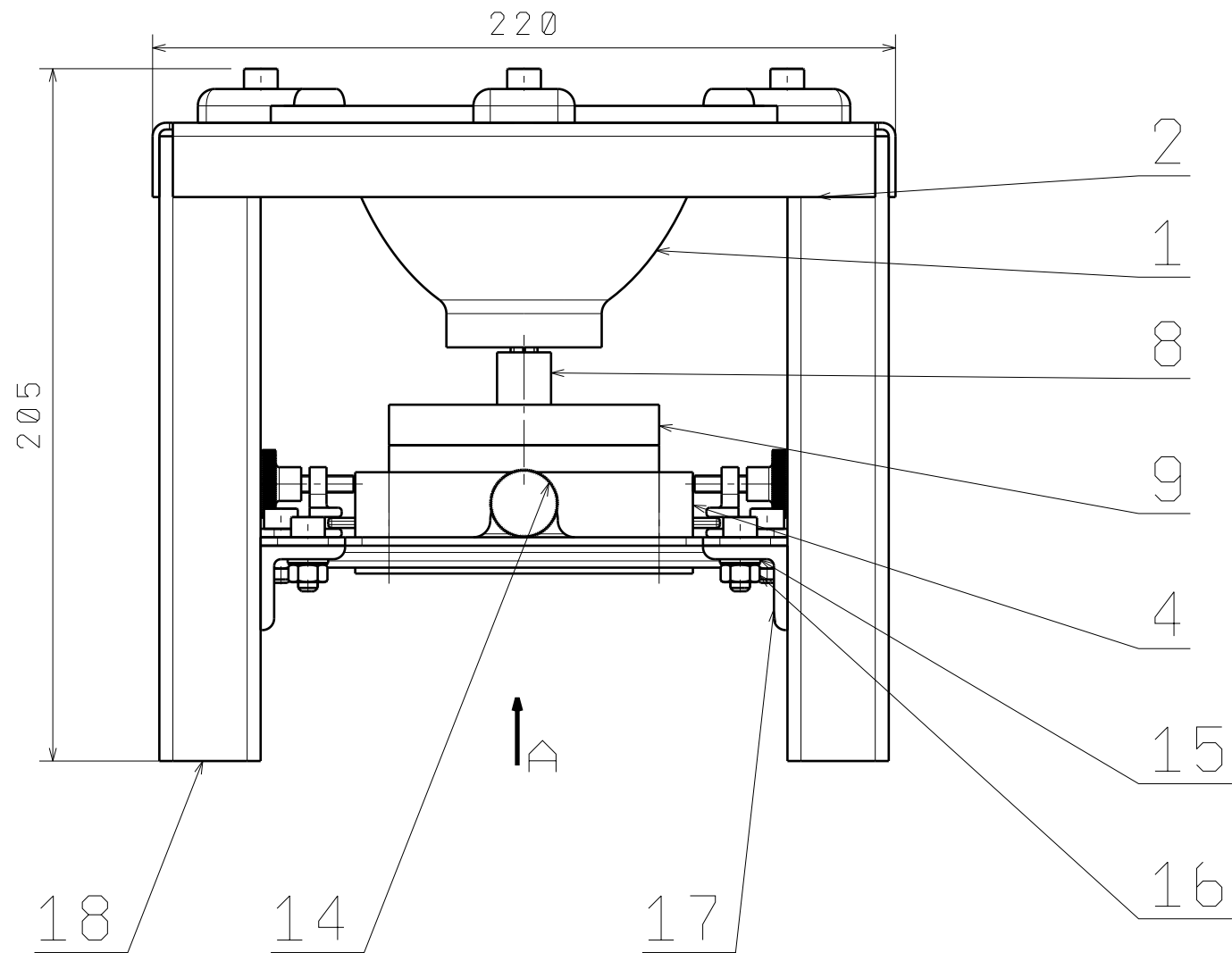
E

D

C

B

A



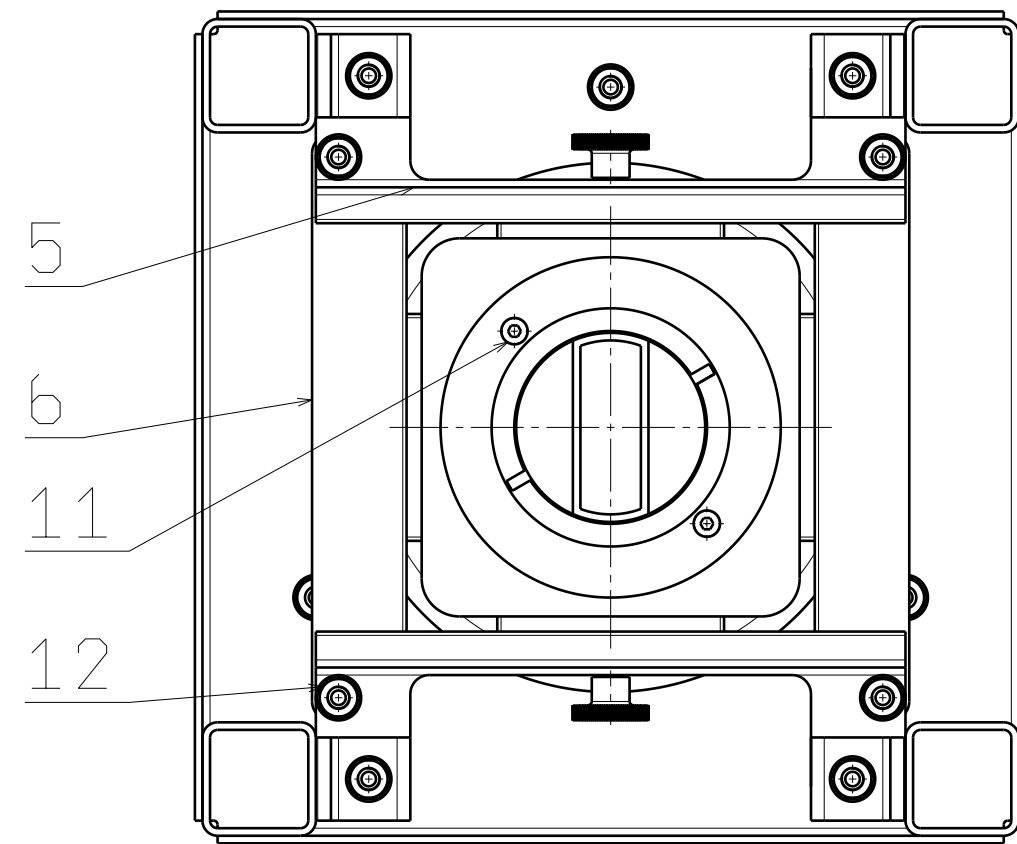
H

G

B

A

POHLED A



4

3

2

1

STRUKTURA POVRCHU		ÚFI VUT v BRNĚ	
MATERIAL			
KRESLIL PRIKRYLOVA	FORMAT A3	MERITKO 1 : 2	
DATUM 26. 5. 2016		SESTAVA - KONSTRUKCE	